

For pricing information: Fax completed form & contact info to 717-665-2861 or email Customer Service at customerservice@harringtonhoists.com

LOAD INFORMATION:

Describe the material you are planning to lift: _____

Tong Type Needed:

Friction (Designed to lift tubes, rolls, round bars, pipe, & other cylindrical materials)

Friction Tong Load Dimensions:

Min (inches) O.D. _____ I.D. _____ Length _____ Weight _____

Max (inches) O.D. _____ I.D. _____ Length _____ Weight _____

Desired Tong Lift Point: O.D. I.D. Ends

Supporting (Designed to lift crates, boxes, containers, & other square/rectangular shaped materials)

Indentation (Designed to lift ingots, boxes, bales, and other straight sided materials)

Supporting/Indentation Tong Load Dimensions:

Min (inches) Width _____ Length _____ Height _____ Weight _____

Max (inches) Width _____ Length _____ Height _____ Weight _____

Desired Tong Lift Point: Width Side Length Side

Product Positioning Prior Lift: Flat Surface Rack Other (specify): _____

Product Positioning Post Lift: Flat Surface Rack Other (specify): _____

Does Lifter Require Protective Lining To Prevent Damage To The Load: Yes No

Is A Latch Required (Used to assist with hands-free operation): Yes No

Is An Auto-Latch Required (Used to assist with hands-free operation): Yes No

Is The Load Hot: Yes No

If Yes: Max Temp: _____ Required Lifter/Load Contact Time : _____ Min Time Between Lifts _____

CRANE SPECIFICATIONS:

Distance Between Top Of The Load To The Crane Hook High Position: _____

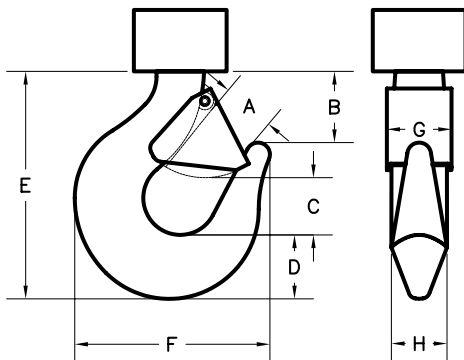
Capacity Of The Crane: _____

Required Duty Cycle Of The Roll Lifter: Lifts Per Hour _____ Lifts Per Day _____

Crane Classification(s): A B C D E F

CRANE HOOK SPECIFICATIONS (Inches) :

A: _____ B: _____ C: _____ D: _____ E: _____ F: _____ G: _____ H: _____



Please provide pertinent application information not supplied above (extreme product or operating temperature, extreme environmental conditions such as temperature or moisture, space or headroom restrictions, additional specifications):
